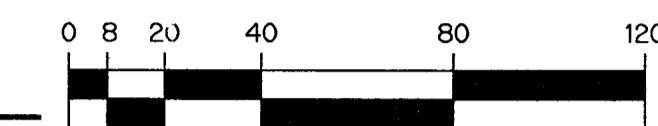
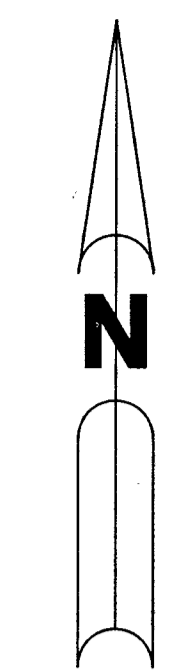


# WHITWORTH AGR-PUD PLAT FOUR

BEING A REPLAT OF ALL OF TRACTS "L8" AND "OS10", WHITWORTH AGR-PUD PLAT ONE, AS RECORDED IN PLAT BOOK 133, PAGE 189; TOGETHER WITH A PORTION OF TRACTS 9 THROUGH 12, 13, 16, 33, 36 AND 40, ALL OF TRACTS 14, 15, 34, 35, 37, 38, 39 AND A PORTION OF ROAD, DYKE AND DITCH RESERVATIONS, BLOCK 60, PALM BEACH FARMS CO. PLAT NO. 3, AS RECORDED IN PLAT BOOK 2, PAGE 45, ALL OF THE PUBLIC RECORDS OF PALM BEACH COUNTY, FLORIDA AND LYING WITHIN SECTION 31, TOWNSHIP 45 SOUTH, RANGE 42 EAST

SHEET 15 OF 22

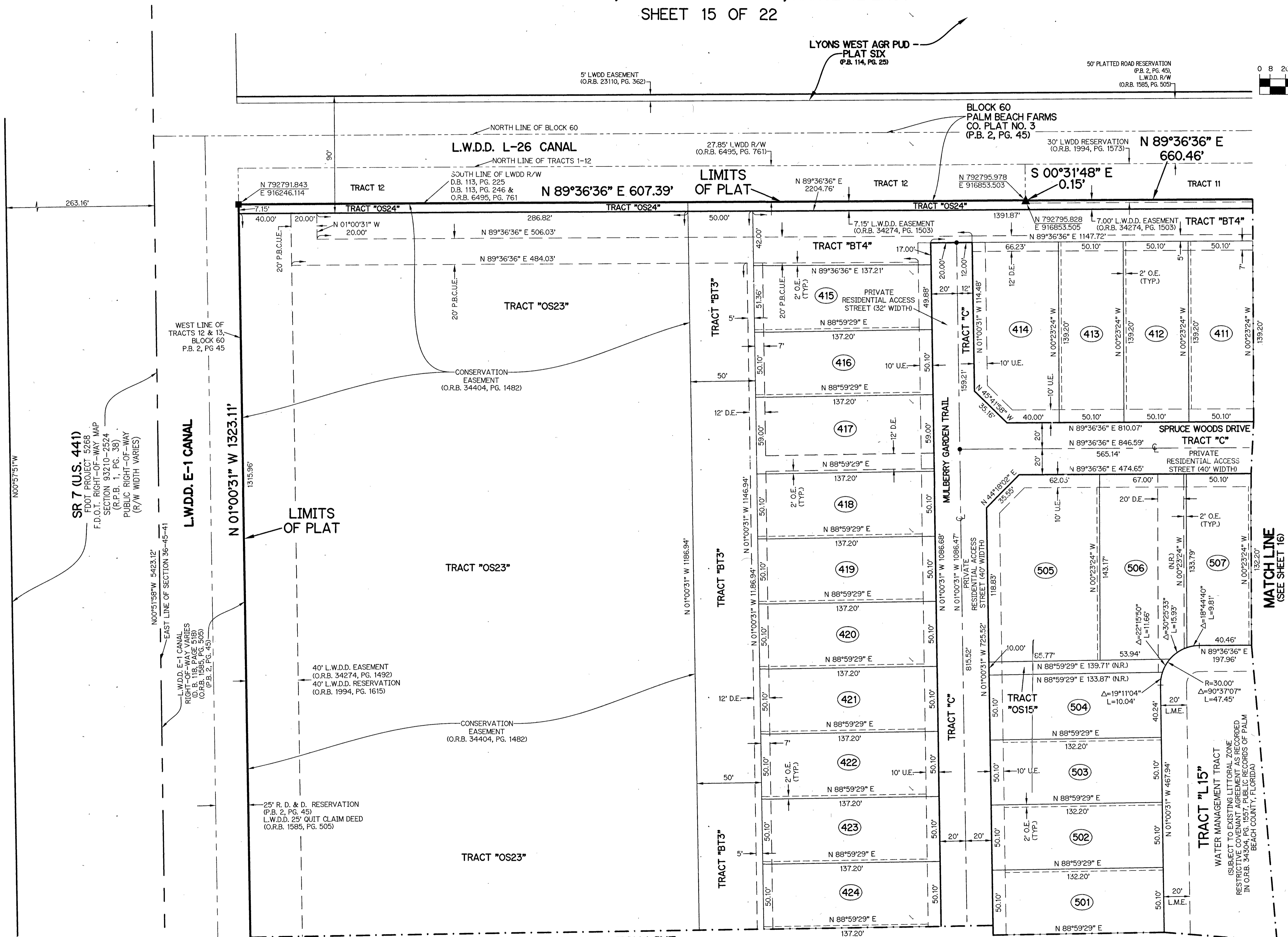
FOUND PALM BEACH COUNTY BRASS DISC IN CONCRETE NE CORNER OF SECTION 36-45-41 N 793016.9200 E 916177.6230



SCALE: 1" = 40'

114

- LEGEND:**
- - SET PERMANENT REFERENCE MONUMENT 4"x4" CONCRETE MONUMENT WITH 1.5" DISK STAMPED PRM L.B. #7741
  - - FOUND PERMANENT REFERENCE MONUMENT 4"x4" CONCRETE MONUMENT WITH 1.5" DISK STAMPED PRM L.B. #7741
  - ▲ - SET PERMANENT REFERENCE MONUMENT 5/8" IRON ROD 1.5' IN LENGTH 1.4" CAP STAMPED PRM L.B. #7741
  - - SET PERMANENT CONTROL POINT NAIL WITH 1.25" DISK STAMPED L.B. #7741
  - - FOUND PERMANENT CONTROL POINT NAIL WITH 1.25" DISK STAMPED L.B. #7741
  - AGR - AGRICULTURAL
  - BLK - BLOCK
  - CB - CHORD 5" ARING
  - CH - CHORD DISTANCE
  - CL - CENTERLINE
  - D.B. - DEED BOOK
  - D.E. - PRIVATE DRAINAGE EASEMENT
  - F.P.L. - FLORIDA POWER & LIGHT
  - L - ARC LENGTH
  - L.A.E. - LIMITED ACCESS EASEMENT
  - LB. - LICENSED BUSINESS
  - L.M.A.E. - LAKE MAINTENANCE ACCESS EASEMENT
  - L.M.E. - LAKE MAINTENANCE EASEMENT
  - L.W.D.D. - LAKE WORTH DRAINAGE DISTRICT
  - NR - NOT RADIAL
  - NR.T.R. - NOT RADIAL TO REAR LINE
  - N.T. - NON-TANGENT
  - N.T.S. - NOT TO SCALE
  - O.R.B. - OFFICIAL RECORD BOOK
  - O.E. - MAINTENANCE & ROOF OVERHANG EASEMENT
  - P.B.C.O. - PALM BEACH COUNTY
  - P.B.C.U.E. - PALM BEACH COUNTY UTILITY EASEMENT
  - P.B. - PLAT BOOK
  - P.C. - POINT OF CURVATURE
  - P.C.C. - POINT OF COMPOUND CURVATURE
  - P.C.P. - PERMANENT CONTROL POINT
  - P.D.E. - PUBLIC DRAINAGE EASEMENT
  - PG. - PAGE
  - PGS. - PAGES
  - P.O.B. - POINT OF BEGINNING
  - P.N.R.I. - POINT OF NON-RADIAL INTERSECTION
  - P.N.T.I. - POINT OF NON-TANGENT INTERSECTION
  - P.O.C. - POINT OF COMMENCEMENT
  - P.O.I. - POINT OF INTERSECTION
  - P.R.C. - POINT OF REVERSE CURVATURE
  - P.R.I. - POINT OF RADIAL INTERSECTION
  - P.S.M. - PROFESSIONAL SURVEYOR AND MAPPER
  - P.T. - POINT OF TANGENCY
  - PUD - PLANNED UNIT DEVELOPMENT
  - R - RADIUS
  - RAD - RADIAL
  - R/W - RIGHT-OF-WAY
  - R.D. & D. - ROAD, DYKE AND DITCH RESERVATION
  - SIRC - SET 5/8" IRON ROD & CAP STAMPED "PRM LB7741"
  - SN&D - SET MAGNETIC NAIL & DISK STAMPED "PRM LB7741"
  - S.T. - SURVEY TIE
  - TYP. - TYPICAL
  - U.E. - UTILITY EASEMENT
  - N=780000.00 - STATE PLANE COORDINATE VALUE
  - E=930000.00 - STATE PLANE COORDINATE VALUE



SR 7 (U.S. 441) FOOT PROJECT 5268 F.D.O.T. RIGHT-OF-WAY MAP SECTION 93210-2524 (R.P.B. 1, PG. 38) PUBLIC RIGHT-OF-WAY (R/W WIDTH VARIES)

L.W.D.D. E-1 CANAL RIGHT-OF-WAY 518' (O.R.B. 1585, PG. 505) (P.B. 2, PG. 45)

EAST LINE OF SECTION 36-45-41

L.W.D.D. E-1 CANAL RIGHT-OF-WAY 518' (O.R.B. 1585, PG. 505) (P.B. 2, PG. 45)

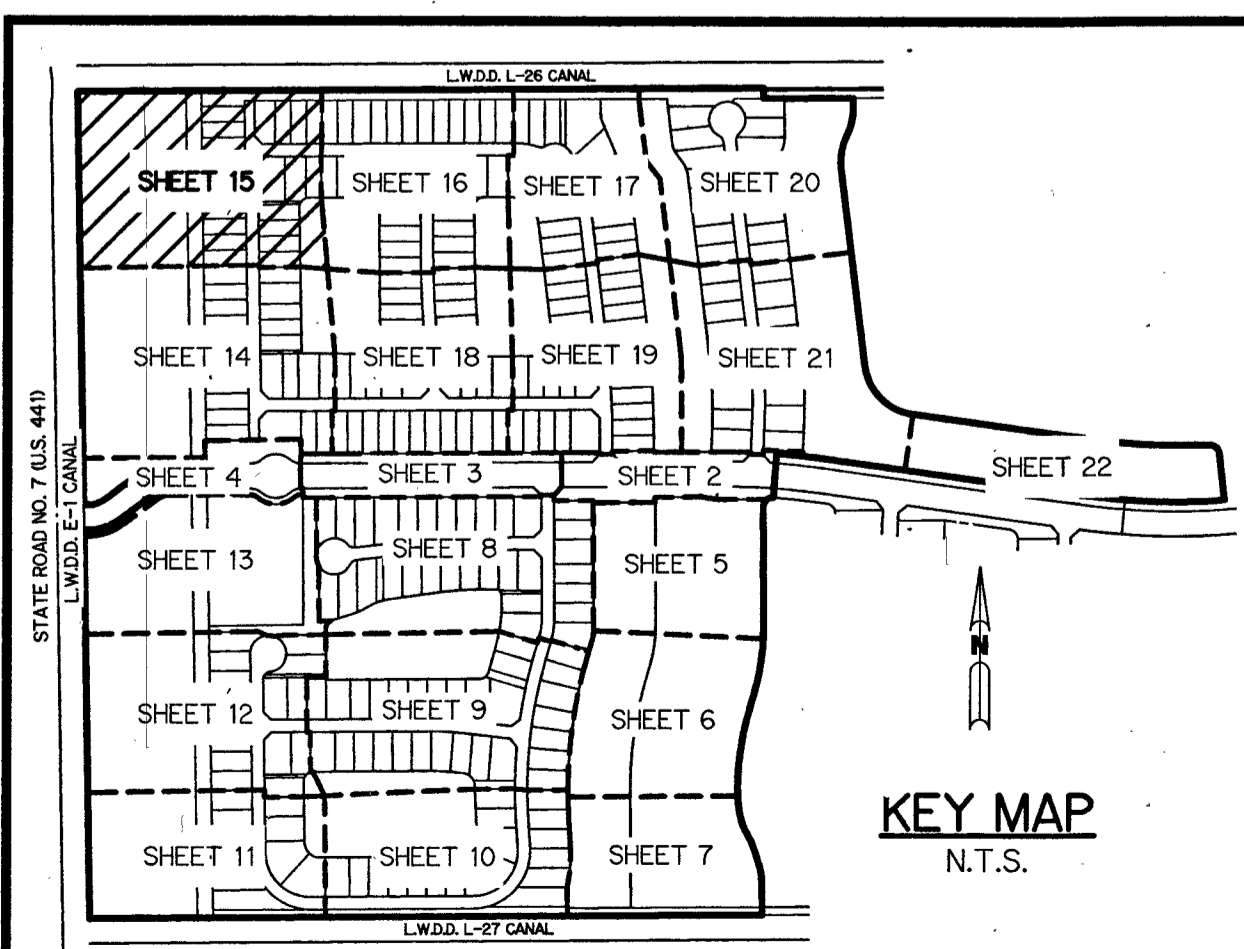
WEST LINE OF TRACTS 12 & 13, BLOCK 60 P.B. 2, PG. 45

MATCH LINE (SEE SHEET 14)

MATCH LINE (SEE SHEET 16)

THIS INSTRUMENT WAS PREPARED BY PERRY C. WHITE, P.S.M. 4213, STATE OF FLORIDA SAND & HILLS SURVEYING, INC. 8461 LAKE WORTH ROAD, SUITE 410 LAKE WORTH, FLORIDA 33467 LB-7741

**NOTES:**  
COORDINATES SHOWN ARE GRID COORDINATES DATUM = NAD 83 (1990 ADJUSTMENT)  
ZONE = FLORIDA EAST ZONE  
LINEAR UNIT = U.S. SURVEY FEET  
COORDINATE SYSTEM = 1983 STATE PLANE TRANSVERSE MERCATOR PROJECTION  
ALL DISTANCES ARE GROUND (UNLESS OTHERWISE NOTED)  
SCALE FACTOR = 1.00002026  
PLAT BEARING = GRID BEARING  
GROUND DISTANCE X SCALE FACTOR = GRID DISTANCE



KEY MAP N.T.S.

WHITWORTH AGR-PUD PLAT FOUR

SH0338

SHEET 15 OF 22